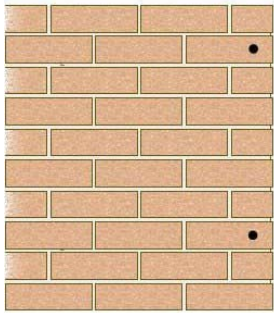
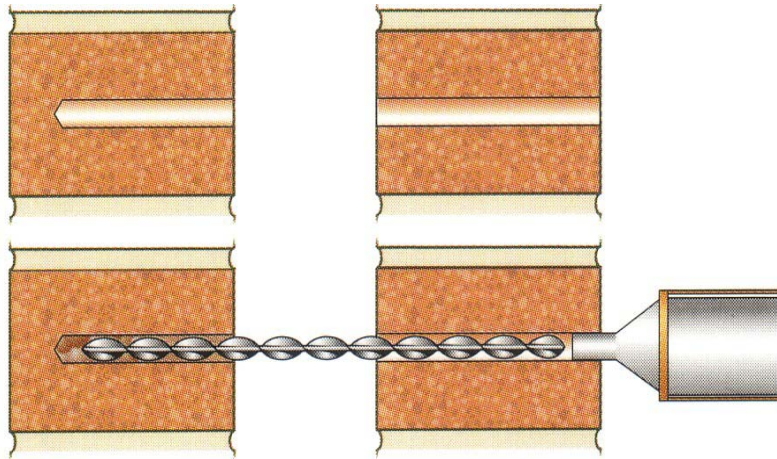
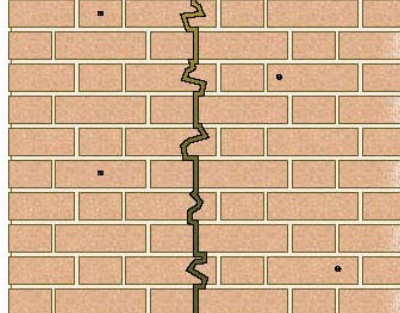
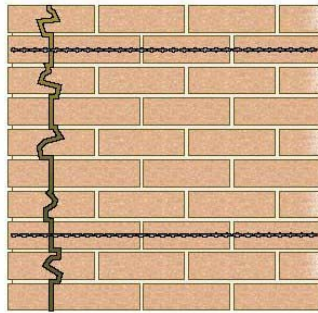


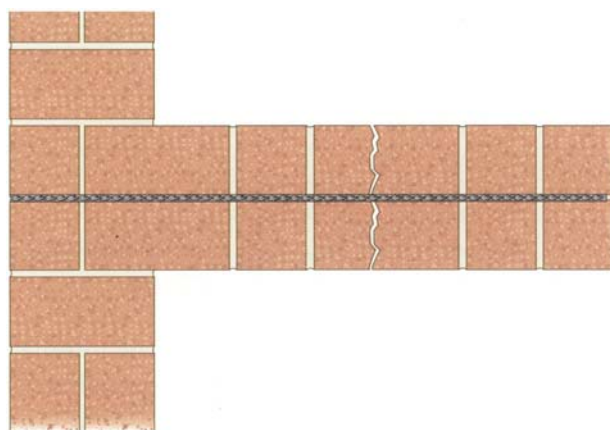
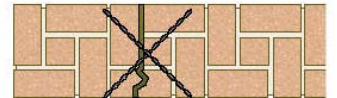
## Thor 9mm D.U. Grout Bonded Ties for Inconsistent Masonry Quality or Deep Embedment.



Repair of Corner Crack.

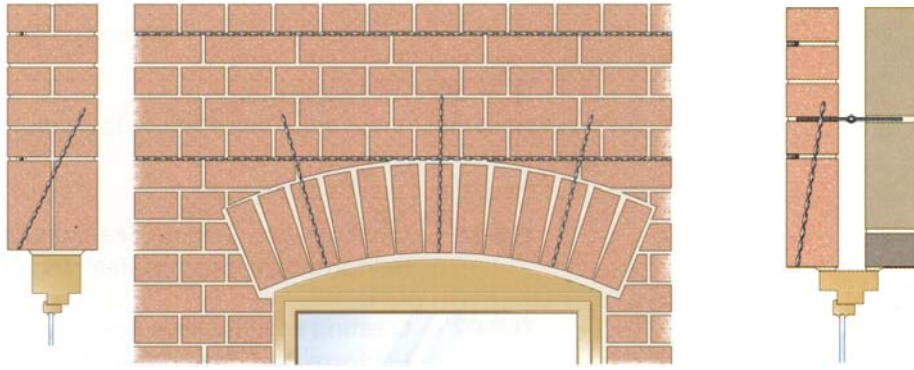


Cross Stitching a Cracked 350mm Solid Wall.  
(Cosmetic crack repair to walls having architectural patch resistant renders).



Repair to Internal Masonry Partition Wall  
(Graphics for Illustrative Purposes Only).





**Repair of Masonry Arches and Lintels.**  
(Graphics for Illustrative Purposes Only).

**Thor 9mm D.U. Grout Bonded Tie Installation.**

Recommended for inconsistent quality masonry, rubble filled or where deep embedment required.

**Cavity Walls.**

1. Drill 12 – 14mm pilot holes to both leaves using masonry drill and clean hole of **all** drillings and dust – inner leaf minimum embedment 75mm.
2. Holes should be thoroughly flushed with water, or treated with a suitable primer where high porosity masonry exists.
3. Install D.U. Grout to remote leaf drilled hole, with appropriate tool, and insert tie.
4. **(Test Only)** Apply test procedure after curing period.
5. Install D.U. Grout to nearside leaf encapsulating the recessed tie and make good in accordance with specification.

*(N.B. For solid walls - fully grout drilled holes and then insert tie).*

Cavity Wall Tie Spacing – Must be determined by a Consulting structural engineer - Subject to minimum tensile proof loads being achieved and in accordance with A.S. 3700 2001' i.e. Max. allowable 600mm grid spacing.

Drivefix and D.U. Grout Bonded tie procedures may be combined where far connection leaf is either harder than near leaf, or, is constructed with hardwood timber studs or timber floor/ceiling/roof timbers.

**Thor 9mm D.U. Grouted Ties Thor D.U. Indicative Usage Rates**  
(Solid Masonry).

Hole Diameter	Approximate Usage Rate
12mm (110ml/metre)	8 Metres per Litre.
13mm (125ml/metre)	7 Metres per Litre.
14mm (150ml/metre)	6 Metres per Litre.

**THORHELICAL® AUSTRALIA**  
A.B.N. 77 088 958 016

P.O. Box 83, Chirnside Park, Vic., 3116.

2 Mayfair Court, Chirnside Park, Vic., 3116.

Tel. (03) 9727 5468 Fax. (03) 9726 4976 Mob. 0414 297 899

Available from: